

Resolution of Respect

Warren Charles Whitman (1911-1994)

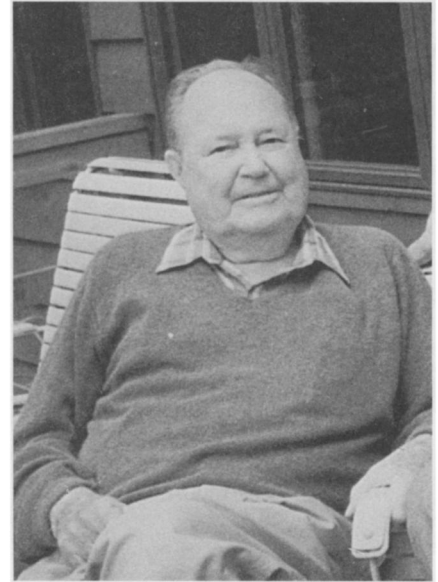
Warren Whitman, recognized for his research in grassland ecology in the Northern Great Plains, passed away in Fargo, North Dakota on 22 August 1994. Born in Fargo on 15 January 1911, he completed both B.S. (1935) and M.S. (1936) degrees at North Dakota Agricultural College under the guidance of the late Herbert Christian Hanson. He finished his doctorate in plant physiology at the University of Wisconsin in 1939, and returned to North Dakota as an assistant botanist with the Agricultural Experiment Station.

He served with the U.S. Army Air Force in the European Theater from 1942 to 1946, and spent a year as a range ecologist with the U.S. Forest Service before again returning to Fargo as Associate Botanist. In 1952 he was promoted to Professor of Botany with a joint appointment in the Experiment Station and the College of Liberal Arts. He chaired the Department of Botany at North Dakota State University from 1958 until his retirement in 1977.

Warren was an outstanding teacher and an ardent and dedicated

research scientist. His work on grassland ecosystem composition, primary production in range and pasture, and in the autecology of grassland species are models of detailed precision. He was a staunch member of the Ecological Society of America for almost 50 years, as well as a leader in the Society for Range Management. He was also a member of AAAS, the North Dakota Natural Science Society, and the American Society of Agronomy. He played a large role in the Grassland Biome studies during the International Biological Program.

Warren will be remembered as a warm and caring humanitarian, and a devoted family man. He gave freely of his time, knowledge, and experience to both students and colleagues. As an administrator he was exemplary, building the ecological program at North Dakota State University to competitive proportions. He also served as Director of Research for the Tri-College University Center for Environmental Studies, a consortium of NDSU with Concordia College and Moorhead State University across the Red River in Minnesota. During the past few years his infirmity prevented much activity, but he



kept current with his science, and always was open to visitors of all ages. He will be missed in the ecological world.

*Robert L. Burgess
State University of New York
College of Environmental
Science and Forestry
Syracuse, NY 13210*

Source: Bulletin of the Ecological Society of America, Vol. 76, No. 1 (Mar., 1995), p. 15. Courtesy of JSTOR.