

Lee R. Dice, President 1953

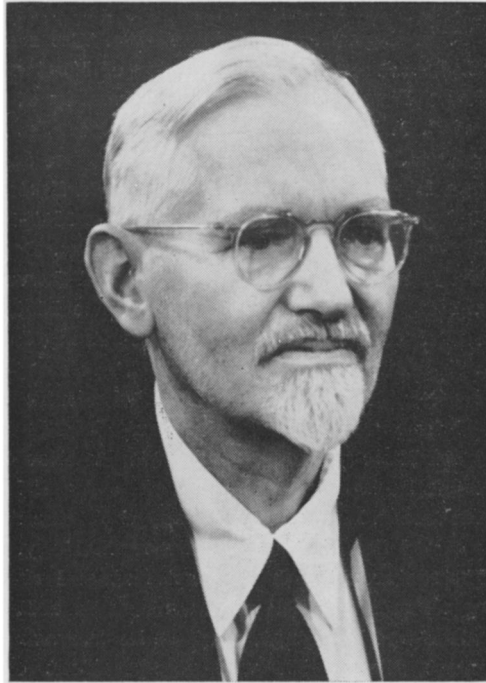
BULLETIN OF THE ECOLOGICAL SOCIETY
OF AMERICA

Vol. 33

December, 1952

No. 4

Published four times a year during March, June, October, and December by The Ecological Society of America. Murray F. Buell, Secretary, Rutgers University New Brunswick, New Jersey
Annual Subscription . . . \$2.00



Dr. Lee R. Dice, President

(See inside front cover)

CONTENTS

Symposia Reprints

Program, Saint Louis Meetings
December 27-30, 1952

Miscellaneous Announcements and Notes

Kodachrome Reproductions

New Members

DR. LEE R. DICE

(See outside front cover)

Lee Raymond Dice was born July 15, 1887, in Savannah, Georgia. His early life was spent on a ranch in southeastern Washington. After attending Washington State College one year, he spent a year at the University of Chicago, where he took courses in animal ecology under V. E. Shelford. He next went to Stanford University where he was granted the A. B. degree in 1911. The following two years he served as Deputy Fur Warden in the Alaska Fisheries Service, U. S. Department of Commerce. The summer of 1913 he was a student of C. C. Adams at the University of Montana Biological Station on Flathead Lake. He next went to the University of California where he was a student of S. J. Holmes, J. C. Merriam, and Joseph Grinnell. The M. S. degree was granted in 1914 and the Ph. D. degree in 1915. He was at Kansas State College from 1915-1917 as Instructor in Zoology and Zoologist in the Agricultural Experiment Station. For the year 1917-18 he was Assistant Professor of Biology at the University of Montana. During the summer of 1918 he was Field Assistant in the U. S. Biological Survey. From August, 1918, to February, 1919, he served as private in the Medical Corps, U. S. Army, part of the time as a student at the Yale Army Laboratory School. From February to June, 1919, he was Assistant in Zoology at the University of Illinois and carried on research in V. E. Shelford's Vivarium. During the summer of 1919 he made a study of Warren Woods for the Michigan Geological and Natural History Survey, under the direction of A. G. Ruthven. Since September, 1919, he has been at the University of Michigan, first as Curator of Mammals in the Museum of Zoology and later as Director of the research unit now called the Institute of Human Biology. Academically he progressed from Instructor through the assistant and associate grades to Professor of Zoology. For a number of years he was a Research Associate of the Carnegie Institute of Washington, where he was associated with F. E. Clements and Forrest Shreve. He was vice-president of the Ecological Society of America in 1938.

Dr. Dice's research has been concerned with the development of methods for the measurement and classification of communities, with the adaptations of races and species of animals to their habitats, with variation and heredity among the mice of the genus *Peromyscus*, and with the factors that affect the evolution of races, species, and communities. He is the author of numerous research papers and of three books: *Biotic provinces of North America*, *Natural communities*, and (with P. M. Blossom) *Studies of mammalian ecology in southwestern North America*.