

awards for 1980

EMINENT ECOLOGIST

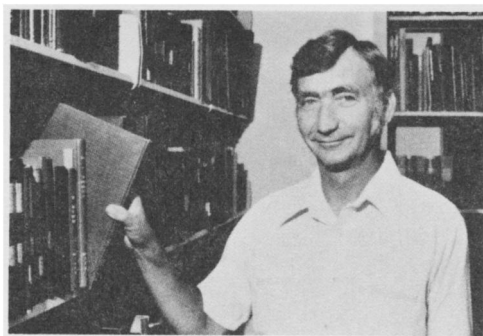
Donald W. Tinkle

The Ecological Society of America confers on Donald W. Tinkle its citation of Eminent Ecologist for 1980. In doing so the Society honors an outstanding teacher, researcher, and administrator, and an internationally recognized leader in vertebrate ecology. Tragically, his scientific career was cut short by his death on 21 February 1980, at the age of 49.

Born 3 December 1930, in Dallas, Texas, Don received his B.S. degree from Southern Methodist University in 1952 and his M.S. and Ph.D. degrees from Tulane University in 1955 and 1956, respectively. Prior to joining the faculty of The University of Michigan in 1965, he was a faculty member at West Texas State University (1956–1957) and Texas Tech University (1957–1965). He served as Curator of Amphibians and Reptiles of The University of Michigan Museum of Zoology until 1975 when he was appointed Director of the Museum, the post he held at the time of his death.

Don was the author of more than 80 scholarly papers. His published research demonstrated a unique and valuable balance of empirical and theoretical approaches to critical problems in ecology and evolutionary biology. His extensive research on the life history of reptiles was outstanding in its detail. He was a pioneer in conducting long-term experiments on natural populations.

Don served as President of the Southwestern Association of Naturalists (1964–1965) and was associate editor of many journals, including *Evolution* and *Ameri-*



can Midland Naturalist. He was also a member of review panels for the National Science Foundation, the Atomic Energy Commission, and the American Institute of Biological Sciences.

Among his many honors he held the Maytag Chair in Vertebrate Ecology at Arizona State University and he was elected a fellow of AAAS and Herpetologist's League. In recognition of his research accomplishments, he was awarded a Guggenheim Fellowship for 1979–1980 to continue his long-term field studies of the life history and demography of turtles.

Don's enthusiasm for field ecology inspired and encouraged his many students and colleagues. His standards of excellence in research and dedication to natural science will stand as an example to present and future ecologists.

Arnold Kluge and Frances James

Source: Bulletin of the Ecological Society of America, Vol. 62, No. 1 (Mar., 1981), p. 24. Courtesy of JSTOR