



ECOLOGICAL SOCIETY OF AMERICA  
**esa**

*Jigsaw – A technique for Student-Active Learning*

*Published by the ESA Office of Education and Diversity Programs*

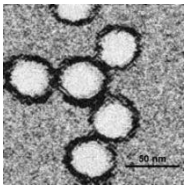
**February 2013**

**Vol. 2 Issue 11**

*Photo Credit from EcoEdDL: An oblique aerial view of the Mullica River showing an invasive reed (*Phragmites australis*) and two species of native grasses (*Spartina* spp.) by Kenneth Able*

### **Special Feature: Rivers and Streams**

#### **What's New in EcoEdDL**



#### **Activity - Investigating the Ecology of West Nile Virus in the United States**

by Barbara J. Abraham and Josephine Rodriguez  
Use maps, online databases, and peer-reviewed literature to learn about West Nile Virus and to generate and test hypotheses correlating WNV infection with biotic and abiotic environmental factors.

Photo credit: West Nile virus, from [Wikipedia.org](http://Wikipedia.org)

#### **Announcements**



#### **NEW! Friday Night – Dinner & A Movie with HHMI**

Following dinner, join HHMI Scientist-Educator, Laura Bonetta, Ph.D., for a special screening of the short film “The Making of the Fittest: Evolving Switches, Evolving Bodies,” one in a series crafted to engage students with memorable examples of the evolutionary process in action.

#### **Upcoming Events**

##### **STEM Interactive Web-based Workshops**

March 12–May 1, 2013

##### **Life Discovery – Doing Science Education Conference**

##### **Inaugural Biology Education Conference**

March 15–16, 2013 | St. Paul, MN

##### **CIRTL Coffee Hour Series**

##### **Teaching and using writing skills in the STEM classroom**

March 20, 2013

##### **Project Kaleidoscope (PKAL) – Advancing what works in STEM education**

Deadline for application

March 27, 2013

##### **Special Webinar: Using Sustainability Concepts to Improve Learning and Prepare Students for the Big Questions**

March 21, 2013

##### **Opportunities for Teacher Participation in Carbon: Transformations in Matter and Energy (K–12)**

Deadline for application

April 1, 2013

##### **National Association for Research in Science Teaching**

##### **Annual International Conference**

April 6–9, 2013 | Rio Grande, PR

##### **National Science Teachers Association National Conference**

More info: <http://www.esa.org/ldc/speakers/#hhmi>

## Keynote Speakers and Panels

The LDC Conference will have **Keynote speaker and panels**, to address pressing issues in Biology Education:

- **Building Partnerships with Scientists & Educators**
- **Digital Resources and Learning for the Future**
- **Building Pathways and Partnerships between K12 and College**
- **Science of Life in a Changing World**

For more information: <http://www.esa.org/ldc/program/agenda/>

## ESA SEEDS Update

*Strategies for Ecology Education, Diversity and Sustainability (SEEDS)*



### 2013 SEEDS Leadership Meeting

31 undergraduate students from across the nation participated in the stirring SEEDS Leadership Meeting held at Dillard University in New Orleans, LA from February 20-24, 2013. A wide variety of speakers presented the impacts of Hurricane Katrina and the BP oil spill on the city, focusing on both ecological and social dimensions. Students also visited sites impacted including the Lower Ninth Ward. In addition, eight ESA members from New Orleans participated in a reception and engaged with our students on Friday evening. Nadine Lymn wrote a [press release on the event](#).

## Resources

### ***Special Feature:*** ***Rivers and Streams***

#### **Changing Hudson Project**

Use these multipart lesson plans created by research scientists and teachers to create a unit on the Hudson River's ecosystem.

#### **Building a Stream Table**

Build a stream table to illustrate the principles of stream flow and the results of erosion.



April 11–14, 2013 | San Antonio, TX

### **CIRTL Coffee Hour Series** **Fostering critical thinking**

April 17, 2013

### **American Society for Microbiology** **Conference for Undergraduate Educators**

May 16–19, 2013 | Englewood, CO

### **American Meteorological Society** **Climate Studies Diversity Project**

May 19–24, 2013 | Washington, DC

### **C.R.E.A.T.E. Summer 2013 Workshops**

June 10–14, 17–21 | Geneva, NY

### **U.S. News STEM Solutions 2013** **Annual Conference**

June 17–19 | Austin, TX

### **Association for Biology Laboratory** **Education**

#### **Annual Conference**

June 25–28, 2013 | University of Calgary, Alberta

---

## **EcoEdDL Stewards**

### **Editorial Board**

Ken Klemow  
Kathleen Shea

### **Advisory Board**

David Kirschtel  
Gerd Kortemeyer  
Nora Bynum  
Philip Bourne

### **Digital Resource Discovery (DRD) Partners**

Botanical Society of America  
Society for the Study of Evolution  
Society for Economic Botany  
Science Pipes, Cornell University

### **DRD Advisory Board**

Teresa Mourad (PI)  
Paul Allen (PI)  
William Dahl (PI)  
Laura M. Bartolo  
Beverly Brown



### Rivers and Streams Resources in EcoEdDL

- **Five teaching activities on rivers, including one dataset**
- **Three teaching activities on streams**
- **17 photographs related to rivers**
- **18 photographs related to streams**

### Made possible by:



Amy L. Chang  
Eve Emshwiller  
David Kirschtel  
Ken Klemow  
Gerd Kortemeyer  
Thomas R. Meagher

### Committee for Diversity and Education (CDE)

#### ESA Education & Diversity programs staff

Teresa Mourad, Director of Education and Diversity Programs  
Andrea McMillen, Education Programs Coordinator  
Fred Abbott, Diversity Programs Coordinator  
Nusrat Mojumder, Diversity Programs Coordinator  
Lisa Adler-Golden, Education Intern  
Yoomee Kim, Education Intern

#### Education Resource Partners



For more visit [www.esa.org/ecoed](http://www.esa.org/ecoed)

You are receiving this newsletter because you are either in ESA's Education section or have been involved with ESA's education initiatives.

[You may subscribe or unsubscribe here at any time.](#)